

**TECHNICAL DATA SHEET**

## Mineral / Stone Wool Pipe Support Blocks

### Description:

Pre-cut mineral wool pipe supports with a durable foil surface, available in a wide range of sizes and insulation thicknesses. They have a density of 200kg/m<sup>3</sup> and an A2 fire rating.

### Applications:

These mineral wool pipe supports are suitable for copper, steel and plastic pipes and offer excellent load carrying capacity and point load resistance. They can be used with various pipe supports, hanging brackets and clamps.

They provide a highly effective insulation system to reduce the impact of thermal bridging, fire and acoustic noise.

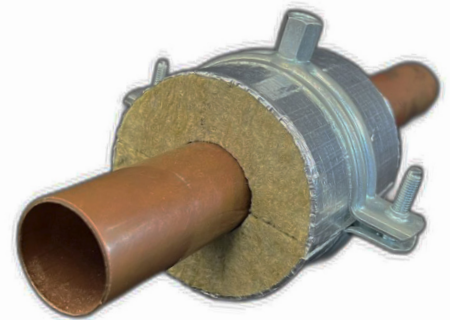
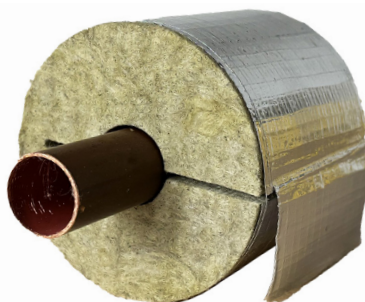
### Installation:

Mineral wool pipe supports are designed to fit a wide range of pipe sizes and allow for quick, hassle-free installation.

To install, first ensure pipework is clean and dry. Simply open the pre-cut support, place over the pipe and slide into position ensuring the pipe clip is aligned centrally along the support length. Seal the aluminium foil on the support with the built in self-adhesive lap and ensure joints between the support block and pipe insulation are sealed with a suitable aluminium foil tape to provide a continuous, effective vapour barrier.

These pipe supports are maintenance-free, helping to reduce long-term costs.

Please refer to BS5970 2012, thermal insulation code of practice for more information.



# TECHNICAL DATA SHEET

## Product Information:

Property	Value	According To
Pipe Diameter Range	*15 - 406mm	BS EN 13467
Insulated Wall Thickness	*20 - 100mm	BS EN 13467
Linear Length	*80 - 100mm	BS EN 13467
Compressive Strength	250kPa	EN ISO 29469:2022
Thermal Conductivity in 10°C, λ10	0,043 w/mK	EN 14303:2009+A1:2013 (EN 12667)
Maximum Service Temperature	**Stonewool - 250°C Aluminium 90°C	EN 14303:2009+A1:2013 (EN 14707)
Reaction To Fire, Euroclass	A2L - s1 - d0	EN 14303:2009+A1:2013 (EN 13501-1)
Water Absorption, Short Term WS, (Wp )	≤ 1 kg/m <sup>2</sup>	EN 14303:2009+A1:2013 (EN 1609)

\*other sizes available upon request – subject to technical approval. Where pipe loading and system dictates, it may be required to install the support block with a metal load spreading plate - available to purchase separately – contact us for more information. Sizes greater than 89mm diameter are manufactured as 2 split shells with V groove interlocks for increased compressive strength.

\*\*Surface temperature of the facing must not exceed +90°C (temperature restriction determined in accordance with heat resistance of adhesive). Kernow mineral wool support blocks are capable of withstanding high temperatures. Whilst in slab form, the insulation material is suitable up to 660°C and maintains dimensional stability, the binder starts to evaporate when its temperature exceeds approximately 250°C. The insulating properties remain unchanged, but the compressive stress weakens. The softening temperature of stone wool products is over 1000°C.

The information in this data sheet describes the conditions and technical properties of the disclosed product, valid at the time of publication of this document and until replaced by the next printed or digital version. Our information material presents applications for which the functions and technical properties of our products have been approved. However, the information does not mean a commercial guarantee. We do not assume liability of the use of third party components used in the application or the installation of our products. We cannot warrant the suitability of our products if used in an area or conditions which are not provided in our information material. As a result of constant further development of our products we reserve the right to make alterations to our information material at any time.