

TECHNICAL DATA SHEET

Mineral / Stone Wool Pipe Support Blocks

Description:

Pre-cut mineral wool pipe supports with a durable foil surface, available in a wide range of sizes and insulation thicknesses. They have a density of 200kg/m³ and an A2 fire rating.

Applications:

These mineral wool pipe supports are suitable for copper, steel and plastic pipes and offer excellent load carrying capacity and point load resistance. They can be used with various pipe supports, hanging brackets and clamps.

They provide a highly effective insulation system to reduce the impact of thermal bridging, fire and acoustic noise.

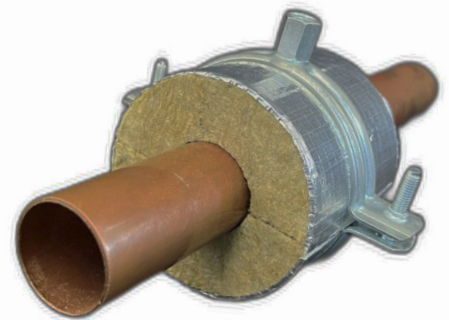
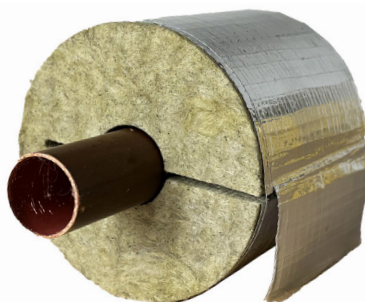
Installation:

Mineral wool pipe supports are designed to fit a wide range of pipe sizes and allow for quick, hassle-free installation.

To install, first ensure pipework is clean and dry. Simply open the pre-cut support, place over the pipe and slide into position ensuring the pipe clip is aligned centrally along the support length. Seal the aluminium foil on the support with the built in self-adhesive lap and ensure joints between the support block and pipe insulation are sealed with a suitable aluminium foil tape to provide a continuous, effective vapour barrier.

These pipe supports are maintenance-free, helping to reduce long-term costs.

Please refer to BS5970 2012, thermal insulation code of practice for more information.



TECHNICAL DATA SHEET

Product Information:

Property	Value	According To
Pipe Diameter Range	*15 - 406mm	BS EN 13467
Insulated Wall Thickness	*20 - 100mm	BS EN 13467
Linear Length	*80 - 100mm	BS EN 13467
Compressive Strength	250kPa	EN ISO 29469:2022
Thermal Conductivity in 10°C, λ10	0,043 w/mK	EN 14303:2009+A1:2013 (EN 12667)
Maximum Service Temperature	**Stonewool - 250°C Aluminium 90°C	EN 14303:2009+A1:2013 (EN 14707)
Reaction To Fire, Euroclass	A2L - s1 - d0	EN 14303:2009+A1:2013 (EN 13501-1)
Water Absorption, Short Term WS, (Wp)	≤ 1 kg/m ²	EN 14303:2009+A1:2013 (EN 1609)

*other sizes available upon request – subject to technical approval. Where pipe loading and system dictates, it may be required to install the support block with a metal load spreading plate - available to purchase separately – contact us for more information. Sizes greater than 89mm diameter are manufactured as 2 split shells with V groove interlocks for increased compressive strength.

**Surface temperature of the facing must not exceed +90°C (temperature restriction determined in accordance with heat resistance of adhesive). Kernow mineral wool support blocks are capable of withstanding high temperatures. Whilst in slab form, the insulation material is suitable up to 660°C and maintains dimensional stability, the binder starts to evaporate when its temperature exceeds approximately 250°C. The insulating properties remain unchanged, but the compressive stress weakens. The softening temperature of stone wool products is over 1000°C.

The information in this data sheet describes the conditions and technical properties of the disclosed product, valid at the time of publication of this document and until replaced by the next printed or digital version. Our information material presents applications for which the functions and technical properties of our products have been approved. However, the information does not mean a commercial guarantee. We do not assume liability of the use of third party components used in the application or the installation of our products. We cannot warrant the suitability of our products if used in an area or conditions which are not provided in our information material. As a result of constant further development of our products we reserve the right to make alterations to our information material at any time.

TECHNICAL DATA SHEET

Order Codes / Clamp Guide

NB		OD (mm)	Cu (mm)	Product Type	Insulation Thickness					
Inch	(mm)				20mm	25mm	30mm	35mm	40mm	50mm
-	-	17	-	Mineral Wool Block	43001	43049	43097	43145	43193	43289
				Clamp (M8/M10)	04960	04962	04963	04964	04965	04968
				HD Clamp	-	-	04050	04052	04053	04054
				Split Band Clip	19821	-	19823	19807	19829	-
1/2	15	21	22	Mineral Wool Block	43002	43050	43098	43146	43194	43290
				Clamp (M8/M10)	04961	04962	04963	04965	04966	04969
				HD Clamp	-	-	04051	04052	04053	04055
				Split Band Clip	19822	19824	19826	19807	19830	19833
3/4	20	27	28	Mineral Wool Block	43004	43052	43100	43148	43196	43292
				Clamp (M8/M10)	04962	04963	04964	04965	04967	04970
				HD Clamp	-	04050	04052	04053	04053	04056
				Split Band Clip	19823	19825	19828	19808	19831	19834
1	25	34	35	Mineral Wool Block	43006	43054	43102	43150	43198	43294
				Clamp (M8/M10)	04963	04964	04965	04967	04968	04970
				HD Clamp	04050	04051	04052	04053	04054	04057
				Split Band Clip	19825	-	19829	19808	-	19836
1 1/4	32	42	42	Mineral Wool Block	43007	43055	43103	43151	43199	43295
				Clamp (M8/M10)	04964	04965	04967	04968	04969	04971
				HD Clamp	04051	04052	04053	04054	04055	04057
				Split Band Clip	19827	-	19830	-	19833	-
1 1/2	40	48	-	Mineral Wool Block	43008	43056	43104	43152	43200	43296
				Clamp (M8/M10)	04964	04966	04967	04969	04970	04972
				HD Clamp	04052	04053	04054	04055	04056	04058
				Split Band Clip	19828	-	19831	-	19835	19837
-	-	54	54	Mineral Wool Block	43010	43058	43106	43154	43202	43298
				Clamp (M8/M10)	04965	04967	04968	04969	04970	04973
				HD Clamp	04052	04053	04054	04056	04057	04058
				Split Band Clip	19829	19830	19832	-	19836	19839
2	50	60	-	Mineral Wool Block	43011	43059	43107	43155	43203	43299
				Clamp (M8/M10)	04966	04968	04969	04970	04971	04973
				HD Clamp	04053	04054	04055	04056	04057	04059
				Split Band Clip	19830	19831	19833	-	19836	19839
-	-	67	-	Mineral Wool Block	-	43061	43109	43157	43205	43301
				Clamp (M8/M10)	04967	04968	04969	04970	04972	04974
				HD Clamp	04053	04054	04056	04057	04058	04059
				Split Band Clip	19829	-	19834	-	19837	19840
2 1/2	65	76	76	Mineral Wool Block	-	43063	43111	43159	43207	43303
				Clamp (M8/M10)	04968	04969	04970	04972	04973	04976
				HD Clamp	04054	04056	04057	04058	04058	04060
				Split Band Clip	19832	19834	19836	-	19839	-

Clamp (M8/M10)



- 2 screw clamp
- Screws secured with anti-loss washer
- Zinc plated finish

HD Clamp



- Heavy Duty
- CO₂ welded connection nut
- Captive locking nut & bolt

Split Band Clip



- 2 piece clamp
- Zinc plated finish

Continued:

TECHNICAL DATA SHEET
Order Codes / Clamp Guide (Continued)

NB		OD (mm)	Cu (mm)	Product type	Insulation Thickness					
Inch	(mm)				20mm	25mm	30mm	35mm	40mm	50mm
3	80	89	-	Mineral Wool Block	-	43066	43114	43162	43210	43306
				Clamp (M8/M10)	04970	04971	04972	04973	04974	04977
				HD Clamp	04056	04057	04058	04059	04059	04061
				Split Band Clip	19835	19836	19838	-	19839	19843
-	-	108	108	Mineral Wool Block	-	43070	43118	43166	43214	43310
				Clamp (M8/M10)	04972	04973	04974	04976	04977	04979
				HD Clamp	04058	04059	04059	04060	04061	04062
				Split Band Clip	19837	19839	19840	-	19843	19846
4	100	114	-	Mineral Wool Block	-	43072	43120	43168	43216	43312
				Clamp (M8/M10)	04972	04973	04976	04977	04977	04979
				HD Clamp	04058	04059	04060	04061	04061	04062
				Split Band Clip	-	19840	-	-	19844	-
5	125	140	-	Mineral Wool Block	-	43077	43125	43173	43221	43317
				Clamp (M8/M10)	04976	04977	04978	04979	-	-
				HD Clamp	04060	04061	04061	04062	04063	-
				Split Band Clip	19842	19843	19845	-	19847	19850
6	150	169	-	Mineral Wool Block	-	43080	43128	43176	43224	43320
				Clamp (M8/M10)	04979	-	-	-	-	-
				HD Clamp	04062	04062	04063	-	-	-
				Split Band Clip	19846	19847	19849	19813	19851	19854

All data provided is correct at the time of print, but is subject to change by Kernow Fixings; please contact one of the Kernow team on 01726 624600 or sales@kernow-how.com to obtain the latest product information at the time of purchase.