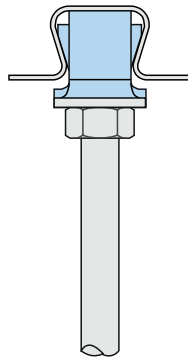
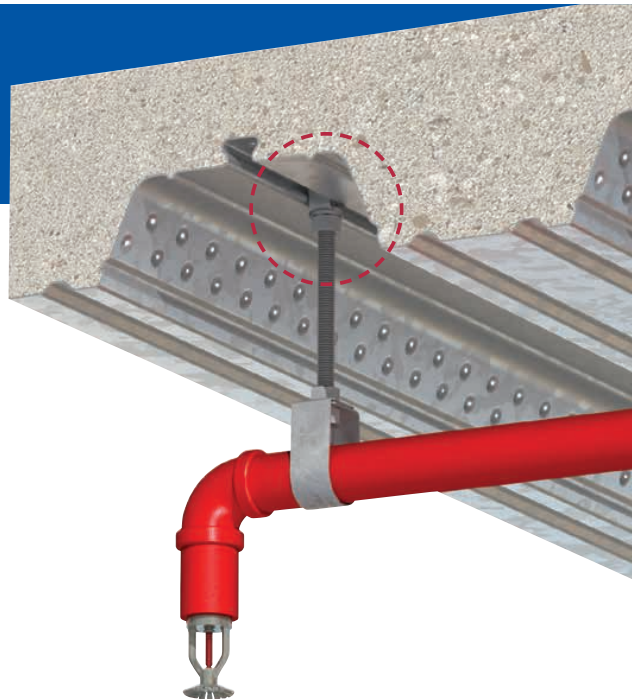
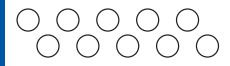


## PRODUCT INFORMATION SHEET

### Type COM

Designed for use with the ComFlor® 60, ComFlor® 80 and ComFlor® 95 decking profiles manufactured by Tata Steel.

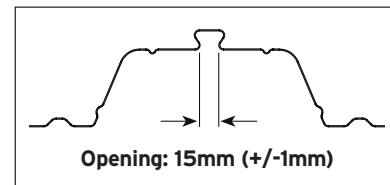


For Characteristic Resistances when designing a connection to Eurocode 3, refer to DoP No.023 (CE) or DoC No.123 (UKCA) on Lindapter's website. Alternatively, request a DoP or DoC brochure.



Locking Plate: Pre-galvanised strip. Wedge: Cold formed steel, zinc plated.

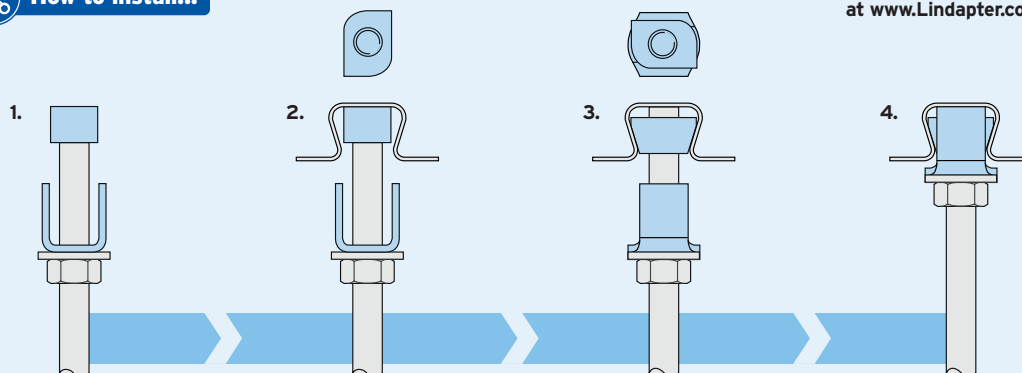
Product Code	Rod min 4.6	Safe Working Load (FOS 3:1)	
		Tensile / 1 Rod kN	Tightening Torque Nm
COM10	M10	1.25	10



➤ Independently fire tested in accordance with BS EN 1991-1-2. For fire ratings please refer to [www.Lindapter.com](http://www.Lindapter.com)

#### How to install...

▶ Watch the installation video at [www.Lindapter.com](http://www.Lindapter.com)



- 1) Pre-assemble the Locking Plate and wedge (flat surface facing up) onto the threaded rod.
- 2) Insert wedge into the re-entrant channel of the decking and rotate 90°.
- 3) Slide the plate up the threaded rod, over the wedge, to lock it in position into the channel.
- 4) To hold the assembly in position, tighten a nut beneath the plate and washer to the tightening torque specified in the table above.

➤ Install the decking fixings after the concrete has been poured and has reached full strength.

➤ If the decking profile is deformed or distorted, do not install the fixing. If in doubt, contact the Technical Support team for advice.

All data provided is correct at the time of print, but is subject to change by Kernow Fixings; please contact one of the Kernow team on 01726 624600 or [sales@kernow-how.com](mailto:sales@kernow-how.com) to obtain the latest product information at the time of purchase.