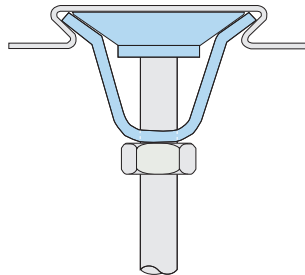
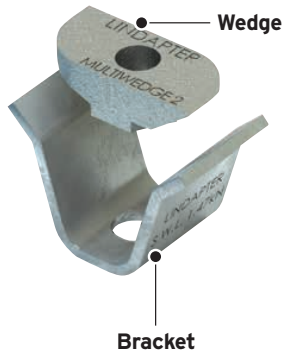
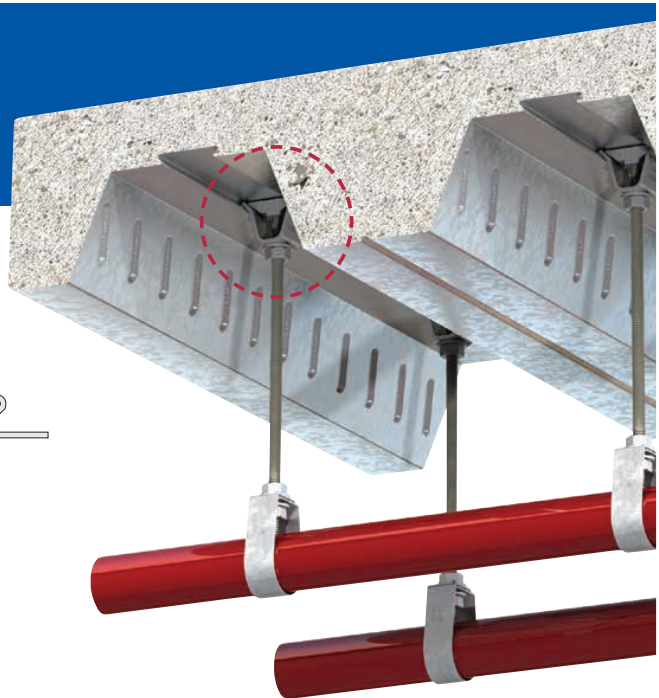


PRODUCT INFORMATION SHEET

Type MW2 - Multiwedge 2

Designed for the Multideck MD60 and Multideck MD80 profiles manufactured by Kingspan®.



For Characteristic Resistances when designing a connection to Eurocode 3, refer to DoP No.019 (CE) or DoC No.119 (UKCA) on Lindapter's website. Alternatively, request a DoP or DoC brochure.



Bracket: Pre-galvanised strip. Wedge: Malleable iron, zinc plated.

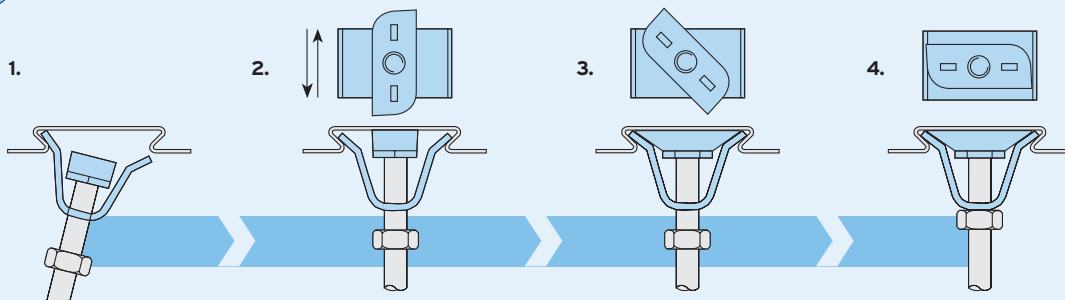
Product Code	Rod min 4.6	Safe Working Load (FOS 3:1)	
		Tensile / 1 Rod kN	Tightening Torque Nm
MW06*	M6	1.47	10
MW08*	M8	1.47	10
MW10*	M10	1.47	10

➤ For fire ratings refer to www.Lindapter.com

* Oversized washer supplied with MW06 and MW08. A washer is optional for MW10.

How to install...

▶ Watch the installation video at www.Lindapter.com



- 1) Pre-assemble the bracket and wedge (flat surface facing up) onto the threaded rod and insert one side of the bracket into the re-entrant channel of the decking.
- 2) Click the other leg of the bracket into position inside the decking and slide the assembly to the desired position along the length of the re-entrant channel.
- 3) Push and turn the wedge clockwise until it locks into the channel walls.
- 4) Tighten the hexagon nut beneath the assembly to the tightening torque specified in the table above.

- Install the decking fixings after the concrete has been poured and has reached full strength.
- If the decking profile is deformed or distorted, do not install the fixing. If in doubt, contact the Technical Support team for advice.
- Although the Type MW2 is similar in appearance to Type MF (p. 72), it should NOT be used in profiles manufactured by CMF*.

All data provided is correct at the time of print, but is subject to change by Kernow Fixings; please contact one of the Kernow team on 01726 624600 or sales@kernow-how.com to obtain the latest product information at the time of purchase.