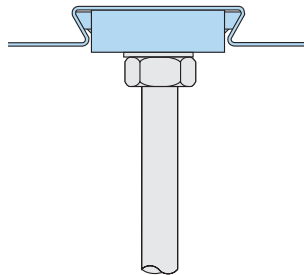
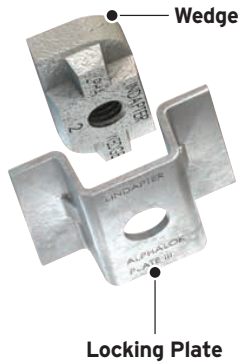


PRODUCT INFORMATION SHEET

Type AW - Alphawedge

Designed for Ribdeck E60 profiles manufactured by Richard Lees Decking (owned by William Hare).



For Characteristic Resistances when designing a connection to Eurocode 3, refer to DoP No.016 (CE) or DoC No.116 (UKCA) on Lindapter's website. Alternatively, request a DoP or DoC brochure.

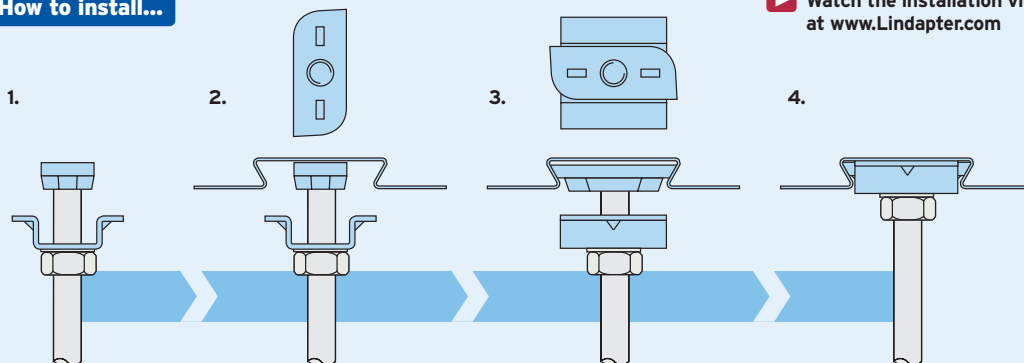


Locking Plate: Pre-galvanised strip. Wedge: Malleable iron, zinc plated.

Product Code	Rod min 4.6	Safe Working Load (FOS 3:1)	
		Tensile / 1 Rod kN	Tightening Torque Nm
AW06	M6	1.0	10
AW08	M8	1.0	10
AW10	M10	1.0	10

➤ For fire ratings refer to www.Lindapter.com

How to install...



▶ Watch the installation video at www.Lindapter.com

- 1) Pre-assemble the Locking Plate and wedge (flat surface up) onto the threaded rod.
- 2) Insert the wedge into the re-entrant channel of the decking and rotate 90°.
- 3) Slide the plate up the threaded rod, over the wedge, to lock it in position into the channel.
- 4) To hold the assembly in position, tighten a nut beneath the plate and washer to the tightening torque specified in the table above.

- Install the decking fixings after the concrete has been poured and has reached full strength.
- If the decking profile is deformed or distorted, do not install the fixing. If in doubt, contact the Technical Support team for advice.
- Although the Type AW is similar in appearance to Type AMD (p. 75), it should NOT be used in profiles manufactured by AMDECK®.

All data provided is correct at the time of print, but is subject to change by Kernow Fixings; please contact one of the Kernow team on 01726 624600 or sales@kernow-how.com to obtain the latest product information at the time of purchase.