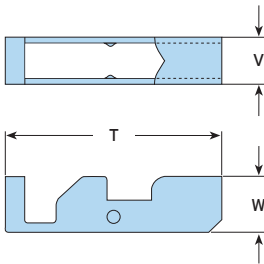


**PRODUCT INFORMATION SHEET**

**Type TC - Toggle Clamp**

Designed for service suspension from pre-cast hollow core slabs (minimum core depth 75mm).



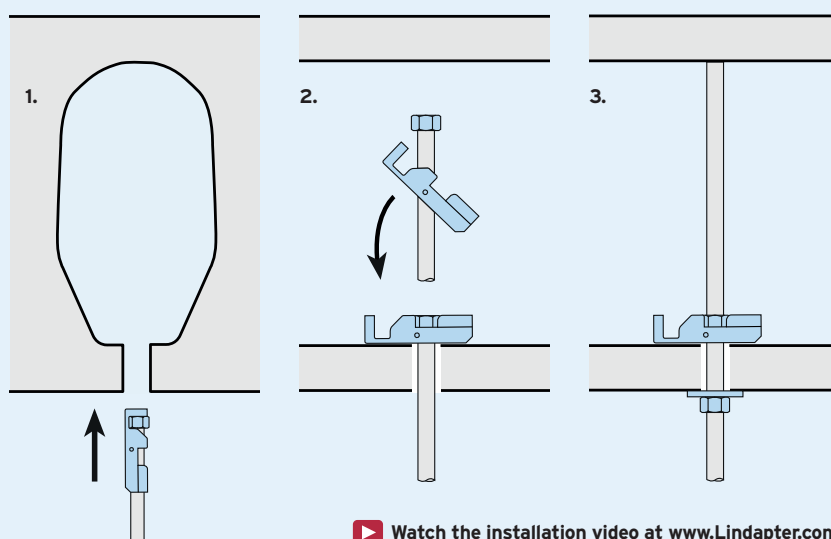
Material: Steel strip, zinc plated.

Product Code	Rod min 8.8	Hole Ø mm	Safe Working Load (FOS 4:1) Tensile / 1 Rod kN	Tightening Torque Nm	Dimensions		
					T mm	W mm	Width V mm
TC08	M8	22	2.45	10	68	16.5	13
TC10	M10	25	2.45	10	68	17.5	15

➤ Safe Working Loads subject to the strength of the supporting section.

**How to install...**

- Instructions for hollow core slab:**
- 1) Pre-assemble the clamp on the rod and insert into the hole (ensure it is central to the hollow core).
  - 2) Shake the rod to allow the toggle body to locate horizontally across the hole, then lower the rod so that the nut locates in the toggle body.
  - 3) Wind up the rod to the top of the section so it is as high as possible. Secure the assembly with a nut and washer.



▶ Watch the installation video at [www.Lindapter.com](http://www.Lindapter.com)

All data provided is correct at the time of print, but is subject to change by Kernow Fixings; please contact one of the Kernow team on 01726 624600 or [sales@kernow-how.com](mailto:sales@kernow-how.com) to obtain the latest product information at the time of purchase.